



**GHENT  
UNIVERSITY**

# GRADE CONVERSION AT GHENT UNIVERSITY: A PRAGMATIC APPROACH

FREDERIK DE DECKER, HEAD INTERNATIONAL RELATIONS OFFICE



**GHENT  
UNIVERSITY**

EST.  
1817

11  
FACULTIES

TOP  
100  
UNIVERSITY

57  
BACHELOR  
PROGRAMMES

150  
MASTER  
PROGRAMMES

50  
ENGLISH  
TAUGHT  
PROGRAMMES

42.000  
STUDENTS

2.800  
EXCHANGES  
YEARLY

600  
PHD'S  
YEARLY

# COMPREHENSIVE UNIVERSITY

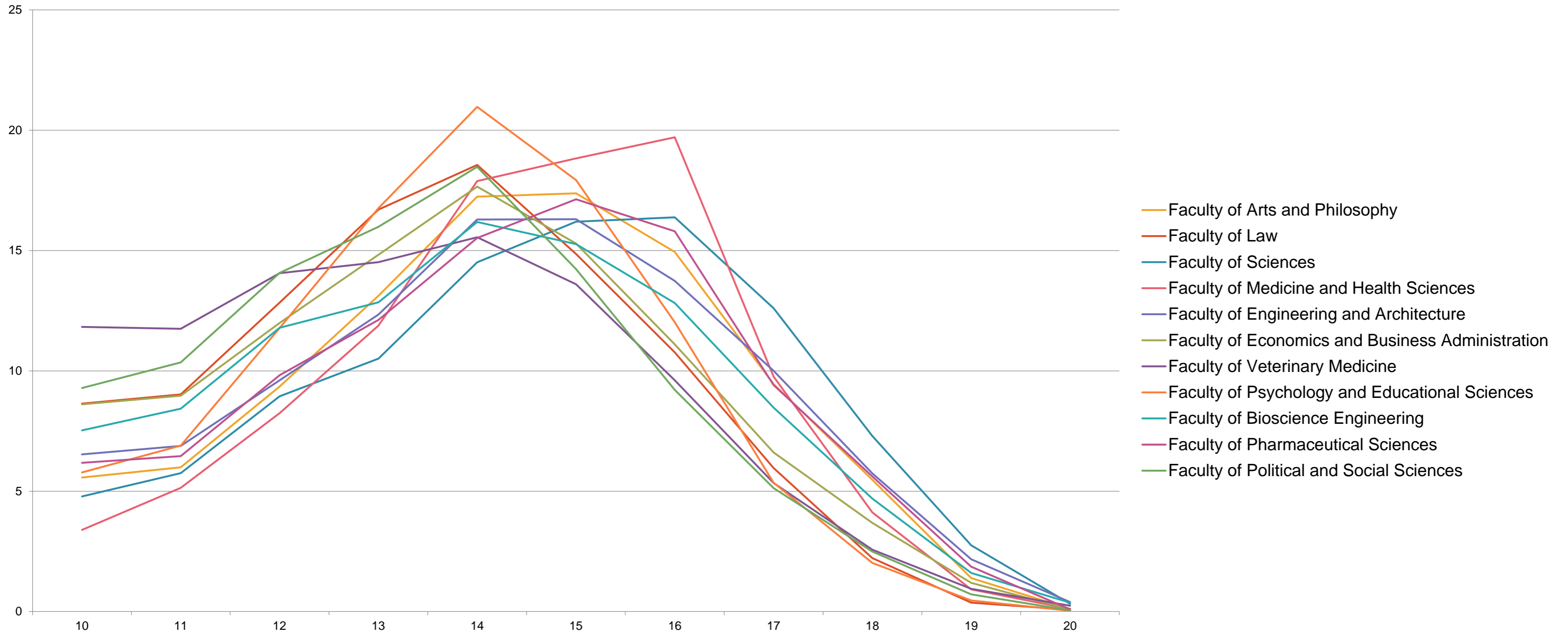
PROGRAMMES AND  
EXCHANGE OPPORTUNITIES  
IN ALMOST ALL DISCIPLINES



# GRADE DISTRIBUTION TABLES

- Ghent University issues Transcript of records mentioning grade distribution  
*Student X: 12/20 → 25(15)60*
- We have 700+ partner institutions
- How many use grade distribution tables?
- How to deal with these differences in 'grading cultures'?

# GRADING AT GHENT UNIVERSITY



# POSSIBLE SOLUTIONS?

- Coordinator of Egracons

“a free, user-friendly web-based tool for grade conversion available to all European HEIs (and beyond) who supply their degree grade distribution tables”

- Mobilising our partners
- Including as many as possible
- But still...



# IN REALITY: IN EUROPE

- Many European institutions
  - Are stuck in 2008... (A-B-C-D-E-F)
  - Do not use ISCED-codes
  - Use a pass/fail system
- Unlike what is mentioned in the ECTS Users' Guides, in the Erasmus Charter for Higher Education Institutions...

# IN REALITY: WORLDWIDE

- No consensus on the use of credit system  
E.g. Three major credit transfer systems are in use in the ASEAN-region:
  - AUN – ACTS: the AUN ASEAN Credit Transfer **System**
  - UMAP – UCTS: the University Mobility in Asia and the Pacific Credit Transfer **Scheme**
  - SEAMEO – RIHED ACTF: the SEAMEO – RIHED Academic Credit Transfer **Framework**
- And certainly no consensus on grade conversion...



# NEED FOR AN ALTERNATIVE, PRAGMATIC APPROACH

- Starting 2018-2019: introduction of a new system at Ghent University, included in the Education and Examination Code
- 5 consecutive steps: preferably step 1, if not possible then 2, if not possible then 3 etc.

# A 5-STEPS APPROACH

- Step 1: Grade distribution table with ISCED reference group
- Step 2: Grade distribution table at the level of the institution / programme / course
- Step 3: Grade distribution table at country level
- Step 4: Grade distribution table based on the A-B-C-D-E scale
- Step 5: No grade distribution table

(+ Pass/Fail)

# 1. GRADE DISTRIBUTION TABLE WITH ISCED REFERENCE GROUP

- The 'normal' (ECTS Users' Guide compliant) system
- To be found by means of Egracons or websites/Transcript of Records of partner institutions
- Collected available information on a sharepoint-site available throughout the university

# 2. GRADE DISTRIBUTION TABLE AT THE LEVEL OF THE INSTITUTION / PROGRAMME / COURSE

## Grading tables

+ new item or edit this list

Alle items Per country ... Find an item

Country	Name	Name (EN)
BE	Facultés Universitaires Saint Louis a Bruxelles	
BE	Haute Ecole 'Groupe ICHEC - ISC Saint-Louis - ISFSC'	ICHEC Brussels Management School
BE	Université de Liège	
BE	Unversité Catholique de Louvain	
CY		University of Cyprus
DE	JUSTUS-LIEBIG-UNIVERSITÄT GIESSEN	Justus Liebig University Giessen
DE	Georg-August-Universität Göttingen	University of Göttingen
DE	UNIVERSITAET HAMBURG	University of Hamburg
DE	KARLSRUHER INSTITUT FÜR TECHNOLOGIE	KIT – Karlsruhe Institute of Technology
DE	Technische Hochschule Köln	
DE	UNIVERSITÄT LEIPZIG	University of Leipzig
DE	JOHANNES GUTENBERG-UNIVERSITAT MAINZ	Johannes Gutenberg University Mainz
ES	UNIVERSIDAD DE CADIZ	University of Cadiz
ES	UNIVERSIDAD DE LEON	The University of León
ES	Universidad Complutense de Madrid	



Dienstleistungseinheit Studium und Lehre

SEARCH

Vor dem Studium

Im Studium

Nach dem Studium

Master Studiengänge

Promotion

Karriere

Alumni

Organisatorisches

Abschlussdokumente

Anträge und Formulare

Bescheinigungen

ECTS-Einstufungstabellen

Exmatrikulation

Weiterbildung

Service für Studierende und Studieninteressierte

Service für KIT-Fakultäten

Amtliche Bekanntmachungen

### ECTS-Einstufungstabellen

Seit dem Wintersemester 2014/2015 weist das KIT neben der Gesamtnote auf dem Zeugnis im Diploma Supplement eine ECTS-Einstufungstabelle aus. Dies geschieht auf der Grundlage der [Satzung des Karlsruher Instituts für Technologie \(KIT\) zur Ausstellung einer „ECTS-Einstufungstabelle“ als Anlage zum Abschlusszeugnis](#). Die ECTS-Einstufungstabelle stellt die Verteilung der innerhalb einer bestimmten Kohorte erzielten Gesamtnoten dar. Es werden daher für die Gesamtnoten der Kohorte alle Notenschritte von 1,0 bis 4,0 aufgeführt und jeweils die im festgelegten Vergleichszeitraum erreichten Prozentwerte zugeordnet. Sofern eine hinreichend große Kohorte existiert, finden Sie im Folgenden die ECTS-Einstufungstabelle des jeweiligen Studiengangs aus dem zugehörigen Abschlussemester.

Lesehilfe zu den ECTS-Einstufungstabellen

A-D	Bachelor	E-G	Bachelor	H-M	Bachelor	N-R	Bachelor	S-Z	Bachelor
	Master		Master		Master		Master		Master

#### Angewandte Geowissenschaften B.Sc.

##### ECTS-Einstufungstabelle

Download

Abschluss Wintersemester 2017/18

PDF

Abschluss Sommersemester 2017

PDF

Abschluss Wintersemester 2016/17

PDF

Abschluss Sommersemester 2016

PDF

Abschluss Wintersemester 2015/16

PDF

Abschluss Sommersemester 2015

PDF

Abschluss Wintersemester 2014/15

PDF

#### Architektur B.Sc.

##### ETCS-Einstufungstabelle

Download

Abschluss Wintersemester 2017/18

PDF

Abschluss Sommersemester 2017

PDF

Abschluss Wintersemester 2016/17

PDF

Abschluss Sommersemester 2016



PDF

### 3: GRADE DISTRIBUTION TABLE AT COUNTRY LEVEL

- Either from egracons
- Or: based on our own statistically relevant available data

# EGRACONS COUNTRY REPORTS

- Description of existing grading systems in Europe
- So far 30 countries included
- Includes visual representation of grading scales
- Intention to cover all EHEA countries
- To be supplemented with Institutional Reports

		Ireland		Latvia	Luxembourg	Italy	
		Medicine and Health Sciences	Other Courses	University College of Dublin			
<b>Passing Grades</b> 						30 e lode / 31	
			A+	4.2			30
			A	4.0		20	29
			A-	3.8		19	28
			B+	3.6		18	27
			B	3.4		17	26
		100%	B-	3.2	10	16	25
		90%	C+	3.0	9	15	24
		80%	C	2.8	8	14	23
		70%	C-	2.6	7	13	22
		60%	D+	2.4	6	12	21
	50%	D	2.2	5	11	20	
		D-	2.0	4	10	19	
<b>Failing Grades</b> 	40%	E	1.6	3	9	Fail	
	30%	F	1.0	2	8		
	20%	G	0.4	1	7		
	10%				6		
	0%				5		
					4		
					3		
					2		
					1		
					0		

# 4: GRADE DISTRIBUTION TABLE BASED ON THE A-B-C-D-E SCALE

- The pre-2009 ECTS Grading Table (A-B-C-D-E-scale) is still used by many European universities...
- In essence this is also a (very rudimentary) grade distribution table (and better than nothing)

Grade	E	D	C	B	A
Distribution	100%	90%	65%	35%	10%

## 5: NO GRADE DISTRIBUTION TABLE

- Very often the case outside the Erasmus+ programme countries
- But also still with Erasmus-partner institutions
- Advise to the programmes: communicate in advance about the methodology for grade conversion to be used, preferably on the basis of clear agreements with the partner institution



# PASS-FAIL

- Special case = institutions / programmes / courses without grading; just PASS/FAIL
- Impossible to translate this in a local grade (although many attempt, but on what basis?)
- Proposal (legally possible): use the pass/fail and not give a local grade
- Consequence: these courses do not count to calculate a final grade

# CONCLUSIONS

- Almost 30 years of Erasmus (+ ECHE) and ECTS (+ Users' Guide)
- But many institutions still do not comply...
- Possible solutions:
  - Continue to use tailor-made, individual, last-minute
  - A pragmatic university-wide approach anchored in the Education and Examination Code
- We choose for the latter, let's see how it will work...

**The next big thing  
will be a lot of small things.**



[www.ugent.be](http://www.ugent.be)



Universiteit Gent



@ugent



[instagram.com/ugent](https://www.instagram.com/ugent)



Ghent University

[Frederik.DeDecker@UGent.be](mailto:Frederik.DeDecker@UGent.be)

