

# CHARM-EU

## *Innovation in joint education*



EÖTVÖS LORÁND  
UNIVERSITY | BUDAPEST



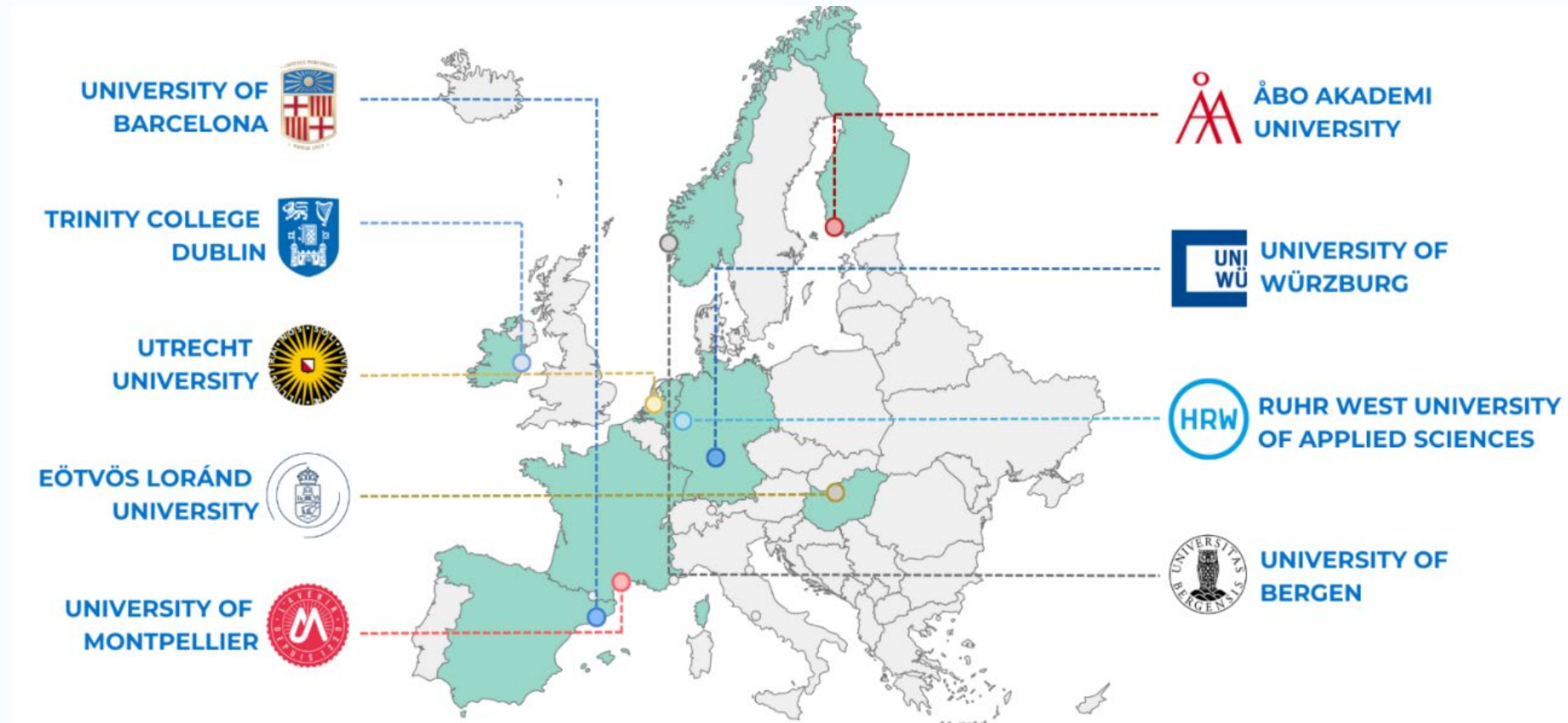
**Co-funded by  
the European Union**

# What is CHARM-EU?



## Facts on CHARM-EU

- First generation – since 2019
  - 5 universities
  - Joint MA degree – 1<sup>st</sup> cohort 2021/22
- Second call
  - 9 universities
  - Expanding MA
  - Expanding educational activities
- Key characteristics:
  - Broad HE institutions
  - Diversity, innovation & inclusion



**Challenge-Driven, Accessible, Research-based, and Mobile**

# Agenda



## A. Joint Masters

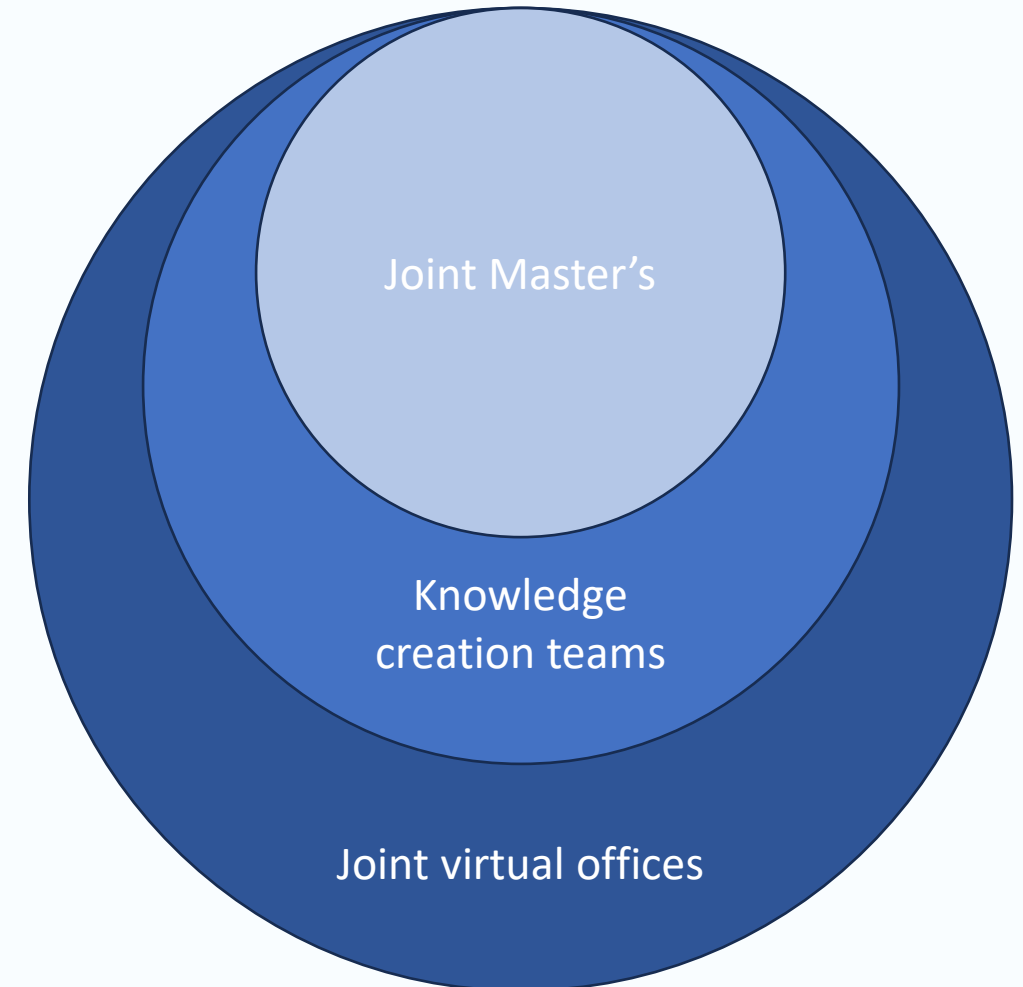
What does our joint education look like? An example of the MSc Global Challenges for Sustainability.

## B. Knowledge creation teams

How is the Joint Master's designed?

## C. Joint virtual offices

How is the Joint Master's organised? Support and joint administration explained.



# What is the MSc in Global Challenges for Sustainability?



The CHARM-EU Master's is a unique, transdisciplinary program focused on sustainability and innovation.

- **Different locations – same education**

- Accreditation with European approach
- Hybrid classrooms
- Support of joint administration office - JVAO

- **Innovation**

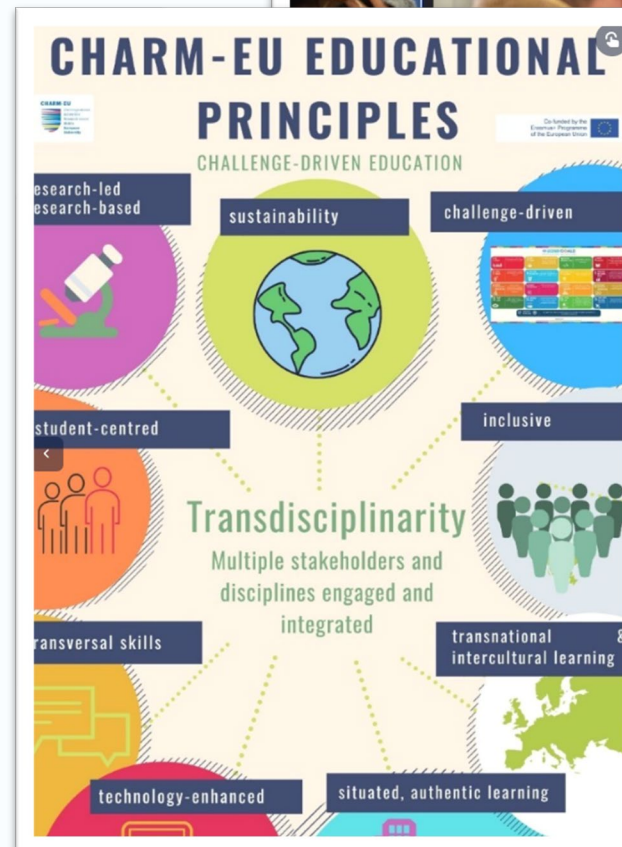
- Programmatic assessment
- Challenge based learning

- **Jointly designed**

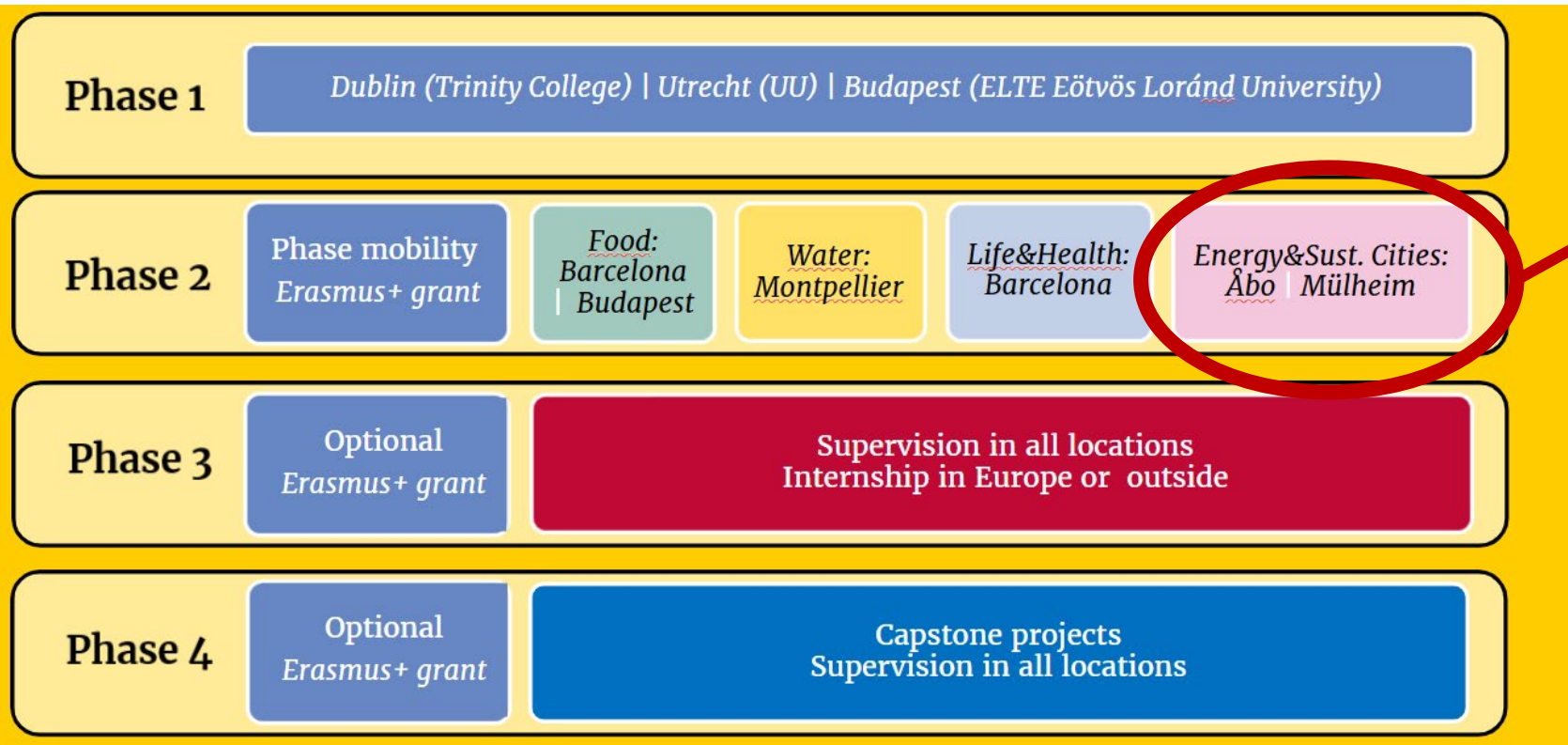
- Based on 9 Educational principles
- 8 Programme Learning Outcomes (PLO's)

- **Facts**

- About 200 graduates
- Around 60-70 students per cohort
- Compulsory mobility



# What is the MSc in Global Challenges for Sustainability?



## Example Energy & Sustainable Cities

- Students will be in Finland and Norway
- 3 modules of 10 ECTS
- Students work on one 'sustainable city' throughout the track, each module from a different perspective
- Teachers from multiple universities



# Knowledge creation teams



**Interdisciplinary and intercultural team of teaching staff**

- Involving students
- Sometimes involving external stakeholders
- Supported by a didactical expert
- Supported by Administrations Office (JVAO)
- Responsible for designing and delivering the modules

Energy and  
sustainable  
cities



# Knowledge creation teams



Sustainable  
energy

Innovation  
and creative  
business

Computer  
science

Energy  
storage

Transportation

Energy and  
sustainable  
cities

Molecular  
Science and  
engineering

Social  
science

Materials  
Science

Engineering  
in climate  
action

Intercultural  
education  
and  
psychology

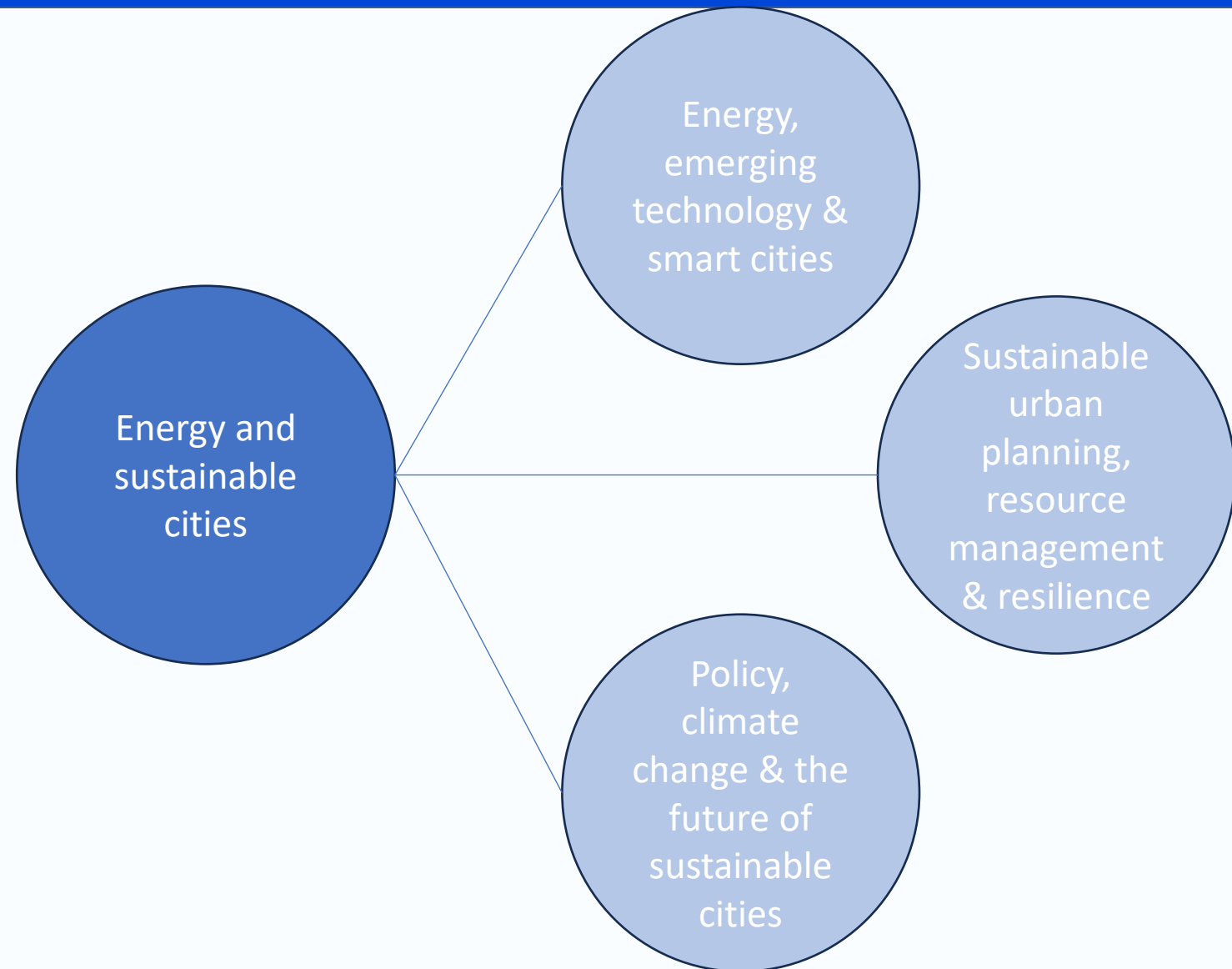
Environmental  
and Landscape  
Geography

# Knowledge creation teams



## Design of three transdisciplinary modules

- **Module coordinators from various countries**
- **Students will be in Norway and Finland**
- **Students will work on an Energy challenge**





# Joint support - Joint Virtual Offices



The CHARM-EU has Joint Virtual Offices to support staff and students.

## ● Joint Offices

- Joint Virtual Quality Assurance – JV QA
- Joint Virtual IT office – JV ITO
- Joint Virtual Diversity, Equity and Inclusion office – JV- DEI
- Joint Virtual Administrative office – JVAO

## ● Joint Boards

- Joint Board of Examiners
- Joint Programme Board & Academic Council
- Joint Assessment Committee

## ● Joint degree

- Joint OER & QA system
- Joint degree & diploma supplement– signed by all universities

**Master's in Global Challenges for Sustainability**

Joint degree delivered by the University of Barcelona, Utrecht University, Eötvös Loránd University Budapest (ELTE), the University of Montpellier, and Trinity College Dublin, the University of Dublin, members of the CHARM European University Level 7 programme according to the European Qualifications Framework by AQEF Catalunya (registered in EQAR), on 17 December 2020 conforming to the European Approach for the Quality Assurance of Joint Programmes. The accreditation has been accepted by the Netherlands Vrije Universiteit (registered in EQAR), the High Council for Evaluation of Research and Higher Education (Hcéres) – France, registered in EQAR, Trinity College Dublin, the University of Dublin, and is valid by the force of law in Hungary. The CHARM-EU Board of Examiners certifies that the student acquired all Programme Learning Outcomes and passed the three phases of the degree.

**Delivered to** **FIRST NAME NAME**

**Born on** Date of birth **in** City, Country **Date of completion of studies** Day Month Year

**Birth name** First name Name

**Legal mentions**

Spain/Catalonia: Màster Universitari en Retos Globales para la Sostenibilidad / Màster Universitari en Reptes Globals per a la Sostenibilitat. The examinee has been awarded the degree of Master of Science (MSc).

Netherlands: Jelen oklevél igazolja A fenntarthatóság globális kihívásai mesterképzése tanulmányi kötelezettségeinek teljesítését, mester szintű végzettség és az okleveles fenntarthatóság szakértői szakképzettség megszerzését.

France: Arrêté du 1<sup>er</sup> avril 2021 relatif à l'attribution du grade de master aux titulaires du diplôme en partenariat international « Défis globaux pour le développement durable » de l'Université de Montpellier.

**Issued in** **Place of issuing** **on** **Date of issuing** **Reference number** #####

**CHAPEL** Chair of the Board of Examiners Jean-Patrick Respaud

**UNIVERSITAT DE BARCELONA** Rector Joan Guàrdia Olmos

**University of Dublin** Rector Neville Cox

**Utrecht University** Rector Magnificus Heek Kuntzeling

**UNIVERSITAT DE MONTPELLIER** Rector László Borhy

**UNIVERSITAT DE MONTPELLIER** President Philippe Augé



JVAO meeting in Montpellier – March 2024

# Joint Virtual Administrative Office – What is our role?



The CHARM-EU Master's is supported by a unique, Joint Virtual Office to support staff and students.

- **Different locations – joint office**

- Key-tasks per JVAO
- Liaison between CHARM and local HE administration
- Meet in person 1 or 2 per year

- **Administration & student support**

- Registration in all universities' administration
- Start university = home university for mobility
- Access to all student services
- Complimentary CHARM-EU support – f ex DEI office

- **Community**

- Students help each other when moving
- Student engagement is key

## What is the JVAO?

CHARM-EU has developed an innovative joint **Master's in Global Challenges for Sustainability**, delivered across 5 European partner universities.

Staff and students work within and across our universities and are supported by a team of administrators, the **JVAO**.

This **inter-institutional office** works on administrative, organizational and financial affairs in a European University Alliance.

## How is the JVAO structured?

**Five offices** in each of our partner universities with CHARM-EU staff on site. These offices are connected virtually. Each partner office is responsible for a key CHARM-EU responsibility:

Even though each of these tasks is the responsibility of a different university, all officers work on all 5 tasks hand-in-hand, as a unique, **joined**, and **united** office



ADMINISTRATION



EDUCATION



SERVICES



BOARDS



MOBILITY

# Quality assurance in a European alliance



## The CHARM-EU Master's has 1 joint QA system

### ● Innovation in education

- Identify problems & find solutions
- It is new!



### ● PDCA cycle

- Student and staff evaluations
- Academic Rules & regulations (OER) – yearly revision

### ● Representation in the Board of Examiners & Assessment committee

- Different expectations on the role and responsibility
- Difference in employment status and time investment
- Cultural differences to assessment and grading

### ● Dissemination

- Work on European Degree with other alliances
- For-EU4All participation – straight to Brussels



Assessment levels Per Phase									
Pre-novice		Novice		Intermediate		Advanced		Expert	
Phase 1: Preparatory phase									
	Grade range		Grade range		Grade range				
Below expectation	> 35-45	As expected	50-80	Above expectation	85-100				
Pre-novice minus/ discontinue	> 35	Novice minus	50 - 55	Intermediate minus	85				
Pre-novice / remediation	35 - 45	Novice	60 - 70	Intermediate	90-95				
		Novice plus	75 - 80	Intermediate plus	100				
Phase 2: Flexible phase									
	Grade range		Grade range		Grade range		Grade range		
Below expectation	> 35	Below expectation	35-45	As expected	50-80	Above expectation	85-100		
Pre-novice / discontinua	> 35			Intermediate minus	50 - 55	Advanced minus	85		
		Novice / remediation	35 - 45	Intermediate	60 - 70	Advanced	90-95		
				Intermediate plus	75 - 80	Advanced plus	100		
Phase 3: Options phase									
	Grade range		Grade range		Grade range		Grade range		Grade range
Below expectation	> 35	Below expectation	35-45	As expected	50-80	Above expectation	85-100		
Novice / discontinua	> 35			Advanced minus	50 - 55	Expert minus	85		
		Intermediate / remediation	35 - 45	Advanced	60 - 70	Expert	90-95		
				Advanced plus	75 - 80	Expert plus	100		

# One minute paper



Please write down on two post-its

1. What **question** do you have about joint education in alliances?
2. What do you **think** is the added value of joint education in alliances for **the field of higher education**?

Thanks!

[CHARM@uu.nl](mailto:CHARM@uu.nl)

<https://charm-eu.eu/>

<https://charm-eu.eu/get-involved/i-am-support-staff/>



**Your CHallenge-driven  
Accessible  
Research-based  
Mobile  
European University**